

**INITIAL  
ANNUAL  
REPORT**

October 14

**2009**

---

THE INITIAL ANNUAL REPORT OF THE ARKANSAS LOTTERY COMMISSION IS SUBMITTED TO THE LEGISLATIVE OVERSIGHT COMMITTEE FOR REVIEW. THIS SUPPLEMENTAL REPORT REFLECTS THE FIRST 90 DAYS OF OPERATIONS.

**ARKANSAS  
SCHOLARSHIP  
LOTTERY**

# Arkansas Lottery Commission

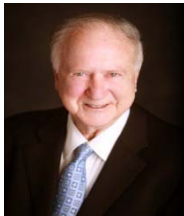
The purpose of the Arkansas Lottery Commission is to oversee the operation of a lottery whose net proceeds will provide scholarships and grants to Arkansas citizens for in-state colleges and universities. Scholarships are to be available for nonprofit, public and private, two-year and four-year colleges and universities. The commission may establish and oversee one or more lotteries to fund the scholarships as well as to fund the commission operations. Arkansas Code Annotated § 23-115-102 and 23-115-801(a) (2) (A).

Under A.C.A. § 23-115-102, the lotteries are to be operated and managed in a manner that:

- Provides continuing entertainment to the public
- Maximizes the revenue generated
- Preserves the integrity and dignity of the process
- Accounts to the public and the General Assembly through reports and audits

The legislation that created the Arkansas Scholarship Lottery (ASL) also established a board of nine members appointed for two, four and six year terms. Three commissioners were appointed by the Governor, three appointed by the President Pro Tempore of the Senate and three appointed by the Speaker of the House of Representatives.

## Commissioners:



Chairman: U.S. Rep. **Ray Thornton** of Little Rock, a former state attorney general, state Supreme Court justice and past president of the University of Arkansas and Arkansas State University.



Vice-chairman: **Dianne Lamberth** of Batesville, secretary of the Lyon College Board of Trustees and a former instructor at the Batesville college.



**George J. Hammons** of Pine Bluff, chairman of the department of chemistry at Philander Smith College in Little Rock, who previously served on the Arkansas Racing Commission and the Bradley County Board of Election Commissioners.



**Ben Pickard** of Beebe, a former director of financial aid at Arkansas State University-Beebe who retired last year as the school's vice chancellor of student services.



**Patty Lynn Shipp** of Morrilton, a convenience store owner active in education and public service; she serves on the South Conway County Public School Foundation, which raises money to implement technology in schools.



**Derrick Smith**, a partner in the Mitchell Williams law firm of Little Rock and a member of the American Bar Association, the Arkansas Bar Association and the Pulaski County Bar Association.



**Joe White** of Conway, a board member of First Security Bank who formerly served on the University of Central Arkansas Board of Trustees.



**Mike Malone** of Fayetteville, executive director of the Northwest Arkansas Council, an association of regional civic and business leaders in Washington and Benton counties, and a former director of White House operations during the Clinton administrations.

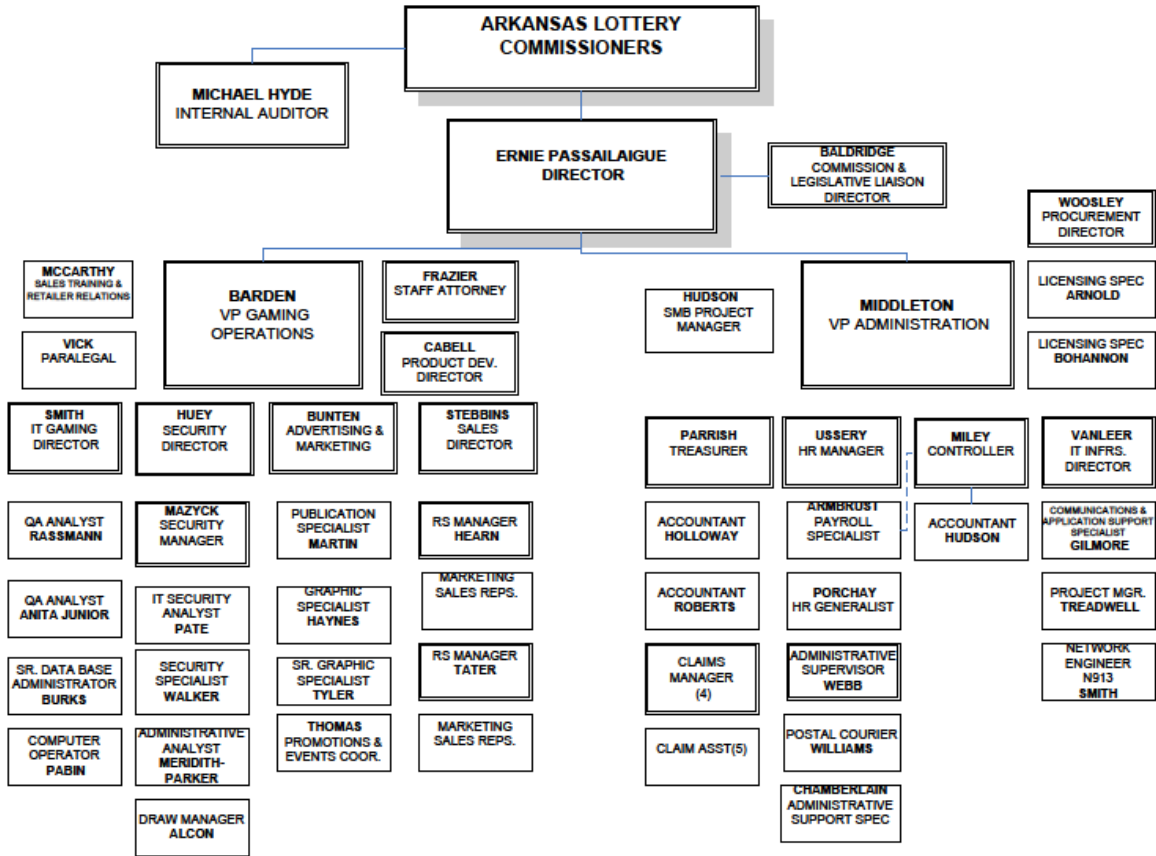


**Dr. Susan Ward-Jones** of Marion, an assistant professor in the College of Public Health at the University of Arkansas for Medical Sciences who serves on the state Board of Health.

The agency referred to as the Arkansas Scholarship Lottery is headquartered at 124 West Capitol Avenue, Little Rock, Arkansas, 72201. Outside of its headquarters, ASL has three Claim Centers which double as regional offices (Jonesboro, Springdale and Camden). Prizes up to \$1,000,000 can be redeemed at any of the three regional Claim Centers. Prizes over \$1,000,000 must be redeemed at the primary Claim Center which is located in the headquarters building in Little Rock.

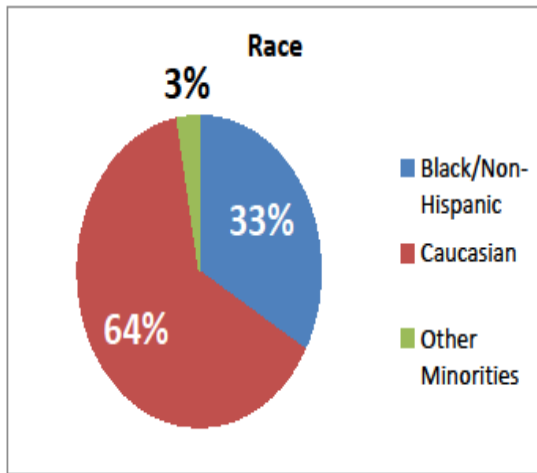
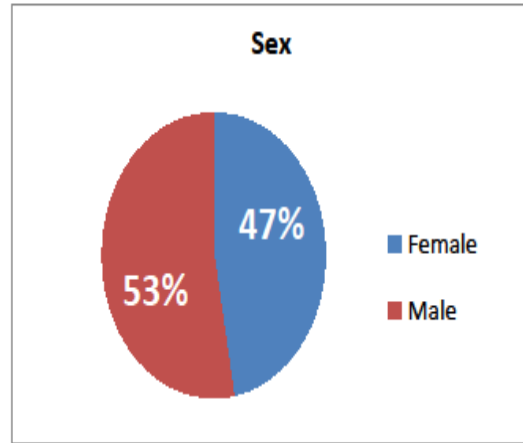
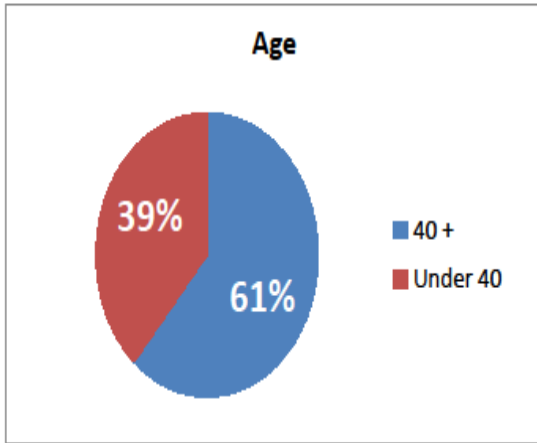
### **Arkansas Scholarship Lottery Staff & Organization:**

The Arkansas Scholarship Lottery has a staff of 70 employees under two major departments with 11 primary divisions and three special functions (Sales Training & Retailer Relations, Commission & Legislative Affairs, and Minority & Female Business Enterprise). The Department of Administration includes the Procurement & Compliance Division, Treasury Division, Controller Division, Human Resource Management Division, and the IT Infrastructure Division. The Department of Gaming Operations includes the Legal Division, IT Gaming Division, Security Division, Advertising & Marketing Division, Product Development Division and the Sales Division.



**DRAFT**  
10/13/09

## ASL DEMOGRAPHICS



**Total Number of Employees as of October 13, 2009: 70**

**Gender:**

Females – 33  
Males – 37

**Race:**

Black/Non-Hispanic - 23  
Caucasian - 44  
American Indian/  
Alaskan Native - 1  
Other – 2

**Age:**

Under 40 – 27  
Over 40 – 43



Executive Director **Ernie Passailaigue**

Ernie Passailaigue is a native South Carolinian, born in Charleston. He graduated from Porter-Gaud School in 1965, earned his undergraduate degree in business administration with an emphasis in accounting from the University of South Carolina in 1969 and received a master's in business administration from The Citadel in 1974. While working in Charlotte, North Carolina as a senior accountant for an international public accounting firm, he was licensed as a certified public accountant in 1971. Passailaigue served as an associate professor of business administration at Charleston Southern University from 1973 to 1988. At the same time, he was managing partner of his own accounting firm in Charleston. Passailaigue is the former owner of the Charleston Royals and Rainbows Professional Baseball Team. In 1988, he was elected to South Carolina Senate and served for 13 years until August 2001, when he resigned to become the executive director of the South Carolina Education Lottery. He has served on a number of boards and committees and has been the recipient of numerous legislative and public service awards.

Mr. Passailaigue currently serves the lottery profession as immediate past president of the North American Association of State and Provincial Lotteries (NASPL), chairman of the Powerball Group and vice president of the Multi-State Lottery Association (MUSL).



Internal Auditor **Michael Hyde**

Michael Hyde earned his bachelor's degree in accounting from Henderson State University in Arkadelphia, Arkansas in May of 1988. He began his professional career as an auditor with the Arkansas Division of Legislative Audit performing financial audits of various state agencies. After 14 ½ years with the Division, he served as the chief auditor of the Arkansas State Highway and Transportation Department for over 6 years where he was responsible for both internal and external audits. Hyde is a certified public accountant, certified internal auditor, certified information systems auditor, and a certified fraud examiner. He is a member of the American Institute of Certified Public Accountants, Arkansas Society of Certified Public Accountants, Association of Certified Fraud Examiners, Central Arkansas Association of Government Accountants, Information Systems Audit and Control Association, and Institute of Internal Auditors.



Vice President of Administration **Ernestine Middleton**

Ernestine Middleton is a native of Washington, D.C. She earned her undergraduate degree in psychology from Howard University in 1973. She then pursued and obtained a master's in public administration with a concentration in management of organizations from Farleigh Dickinson University in 1977. This was followed by a doctorate in theology from Truth Bible College & Seminary in 1999. Middleton served as an adjunct professor of human resource management at Webster University on the military base at Ft. Jackson, Columbia, South Carolina campus. After several years of public service in human resources, directing a program for socially and economically disadvantaged people (CETA) and writing grants for disabled veterans and youth, she started a second career with the South Carolina Education Lottery (SCEL).

Beginning as director of human resources she was promoted to director of internal operations with responsibility for several administrative functions. Middleton served as a planning commissioner for the Town of Blythewood; she is also a cofounder of a non-profit charitable organization, *Women United for Service and Sisterhood*, and was a school board candidate for Richland County School District II. Nominated twice by SCEL for the lottery industry's prestigious *Powers Award*, she graduated from and was a member of the *1<sup>st</sup> Place Team Winner* at Lottery College, an affiliate of the North American Association of State and Provincial Lotteries (NASPL). Middleton has received several professional and civic awards including the *Living the Legacy Award*. She was featured as an *Outstanding State Employee*, was a finalist for the SC Chamber of Commerce's *HR Professional of the Year*, and is a graduate of *Leadership South Carolina*.



Vice President of Gaming **David M. Barden**

After receiving his bachelor's degree from the University of South Carolina in 1980, David Barden earned his juris doctorate from Ohio Northern University. He has a distinguished career in public service having served as director of research for the Senate Transportation Committee and assistant director of the SC Department of Public Safety where he administered the day-to-day management and operations of the state's largest public safety and law enforcement cabinet agency. He returned to the Senate where he served as general staff counsel in Senate litigation as well as drafting and amending legislation. He was



a member of the start-up team of the South Carolina Education Lottery where he started as the staff attorney and was later promoted to director of marketing and product development, utilizing his legal skills as well as his aptitude for industry marketing. Barden's marketing and advertising work was instrumental in SCEL receiving rewards and recognition for its advertising campaigns.

## ORGANIZATIONAL STRUCTURE

Department / Division / Section/Unit	Major Program Area Description
<b>EXECUTIVE OFFICE</b>	To implement the Commission's directives, policies, goals, and objectives; to ensure the maximum return to ASL's stakeholders; to promote ASL with other lotteries, industry groups, the media, civic clubs, and business organizations; to direct all aspects of the operation of ASL, and to safeguard the confidence of the citizens of Arkansas in the integrity of ASL and its products
Commission & Legislative Affairs	To coordinate activities of the Arkansas Lottery Commission including public notification of meetings, recording and maintenance of Commission minutes and documents and to respond to inquiries from public officials including members of the General Assembly and the media; to increase stakeholders' knowledge of ASL and how the money benefits the state and Arkansans; to respond to consumers' concerns, and to promote a positive image of ASL
<b>DEPARTMENT OF GAMING OPERATIONS</b>	To support ASL's gaming operations by ensuring that the games are in compliance with regulatory procedures; to promote, advertise, market and develop lottery products as well as to ensure the integrity of the games, and to oversee the draws, ensure vendor contract compliance and conduct administrative appeal hearings on revocations or denial of retailer licenses.
Legal Division	To provide legal counsel and services to the Arkansas Lottery Commission and to individual ASL divisions; to manage outside counsels' handling of ASL matters; to administer the agency's record retention process and compliance; to initiate and prosecute collection action lawsuits; to respond to Freedom of Information Act (FOIA) requests addressed to the Agency, and to conduct retailer revocation or denial appeal hearings
IT Gaming Division	To provide technological support of ASL's gaming system by ensuring competent testing of software and hardware prior to deployment to the retailer customer base; to ensure system and product integrity by providing in-depth analysis of system distinct anomalies, and to manage the internal control system, security, disaster recovery, gaming system management, quality assurance, and product release management of vendor products
Security Division	To maintain the integrity of all ASL games and investigate fraudulent activities; to administer the draw operations; to ensure MUSL compliance, and to provide a counter check on technology operations internally and with contractors
Advertising & Marketing Division	To effectively and efficiently increase the awareness of ASL's products as well as proactively participate in ongoing, collaborative, promotional relationships in an effort to enhance the effectiveness of ASL's marketing efforts, and to achieve sales goals by executing a broad-based strategic plan that incorporates product development, advertising, and promotions
<ul style="list-style-type: none"> <li>• Promotions &amp; Special Events</li> </ul>	To promote ASL products and generate consumer excitement around the product line through promotional events, radio remotes, attending festivals and similar events, and to implement advertising and promotional program strategy necessary to achieve the sales goals
<ul style="list-style-type: none"> <li>• Publications Unit</li> </ul>	To produce communication tools for retailers and other stakeholders; to promote winner awareness, and to prepare and distribute the beneficiary message
<ul style="list-style-type: none"> <li>• Website Development Unit</li> </ul>	To capitalize on the web traffic ASL's website receives; to monitor the website, and to offer new features with the goals of providing information and promoting sales
Sales Division	To provide service to retailers through direct account management, retailer training, and implementation of sales strategies and to ensure that retailers maintain adequate product supplies and employ best practices to promote the sale of products throughout the retailer network; to achieve sales goals by executing the strategic business plan for current games and new game introductions; to improve retail management of instant product inventory; to ensure optimal product positioning within the store; to increase retailer and consumer knowledge of products, and to optimize retailer and terminal distribution statewide

Product Development Division	To research, develop, and introduce products that optimize sales and profits for the state of Arkansas's educational initiatives; to monitor and analyze performance of products in the marketplace to determine the optimal game mix; to maintain and distribute product information, and to coordinate product development and player loyalty programs with lottery vendors
Sales Training & Retailer Relations	To provide strategic training on sales, marketing and new games and to assist field staff with retailer relations and increasing the productivity of low performing areas
<b>DEPARTMENT OF ADMINISTRATION</b>	To support ASL's administrative operations by ensuring that the human resources management system, licensing of retailers, finance, procurement, prize redemption, debt set-off, strategic planning & organizational development and internal technology systems are maintained and operated at peak effectiveness, and to maintain the infrastructure including fleet management, customer service, fixed asset management, facilities management, telecommunications, and mail service
Human Resources Division	To provide human resource management for ASL in all areas of employment including recruitment, employee relations, compensation, promotions, benefits administration, policy development, separations, safety, staff development, health & wellness, and state & federal compliance, and to improve productivity through the recognition program and employee communication initiatives
<ul style="list-style-type: none"> <li>Customer Service Unit</li> </ul>	To provide visitor reception and general information on various aspects of ASL operations and games including maintaining the recording of the winning numbers, retailer referral to vendors, notifying consumers of game endings and handling general concerns and issues
<ul style="list-style-type: none"> <li>Facilities Management Unit</li> </ul>	To maintain the infrastructure including fleet management, fixed asset management, facilities management, telecommunications, and mail service
Minority & Female Business	To administer special projects such as ASL's Female Owned & Minority Business Program and the initiative to move the ASL into environmentally friendly purchasing and use of resources, and to report and monitor ASL commitment to spending 10 percent of controllable dollars with minority and female owned businesses
Procurement & Compliance Division	To ensure the timely licensing of retailers to sell lottery products, renewal of licenses, and compliance with ASL regulations and laws regarding licensure of retailers. to negotiate lease terms for ASL properties, and to supervise the Request for Proposal (RFP) process for the Agency and process major procurements
<ul style="list-style-type: none"> <li>Licensing Section</li> </ul>	To ensure the timely licensing of retailers to sell lottery products, renewal of licenses, and compliance with regulations and laws regarding licensure of retailers
IT Infrastructure Division	To provide network and data processing services to include application development, technical assistance, equipment and software installation, intranet development and maintenance, and to provide the highest quality technology-based services in the most cost-effective manner to facilitate ASL's mission
Treasury Division	To provide retailer accounting; to maintain banking relationships; to collect all fees and revenue due to ASL, and to process debt set off from prize redemption
<ul style="list-style-type: none"> <li>Claim Center Section</li> </ul>	To manage the claims and prize redemption process, promote winner awareness and process debt set off as claims are validated
Controller Division	To manage the daily cash flow of lottery proceeds, budget, payroll, purchasing, and accounts payable, and to coordinate revenue transfers to the state; to manage the financial processes of all ASL business, and to ensure the maximum return to ASL's stakeholders
<ul style="list-style-type: none"> <li>Payroll Unit</li> </ul>	To process ASL payroll and ensure compliance with FLSA overtime compensation and other applicable laws and regulations
<b>INTERNAL AUDIT SERVICES</b>	To perform confidential internal audits and investigations, coordinate external audits, perform internal consulting services, and otherwise support departments in achieving their performance objectives on behalf of the ASL Commission



MURPHY OIL USA, INC.	N	F
MURPHY OIL USA, INC.	N	F
CONOCO ONE STOP	N	M
NYAL KARAN INC	Y; ASIAN	M
REED'S SHELL INC	N	M
CARLISLE EXXON INC	N	M
FORREST CITY SHELL INC	N	M
CARLISLE CITGO INC	N	M
DALTON PETROLEUM INC	N	M
DALTON PETROLEUM INC	N	M
MARILA ROADMART INC	N	M
JRM & DMC INC	N	F
JRM & DMC INC	N	F
JRM & DMC INC	N	F
JRM & DMC INC	N	F
JRM & DMC INC	N	F
DLJ & JRM ENTERPRISES INC	N	F
ROBERT JOHNSON HOLDINGS LLC	N	M
YARNI CORP	Y; ASIAN	M
J AND J GROCERY	N	M
GARDNER OIL CO INC	N	M
GIBSON OIL CO INC	N	M
GIBSON OIL CO INC	N	M
GIBSON OIL CO INC	N	M
GIBSON OIL CO INC	N	M
GIBSON OIL CO INC	N	M
GIBSON OIL CO INC	N	M
GIBSON OIL CO INC	N	M
THOMAS PETROLEUM INC	N	M
THOMAS PETROLEUM INC	N	M
THOMAS PETROLEUM INC	N	M
THOMAS PETROLEUM INC	N	M
THOMAS PETROLEUM INC	N	M
THOMAS PETROLEUM INC	N	M
THOMAS PETROLEUM INC	N	M
THOMAS PETROLEUM INC	N	M
THOMAS PETROLEUM INC	N	M
THOMAS PETROLEUM INC	N	M
THOMAS PETROLEUM INC	N	M
THOMAS PETROLEUM INC	N	M
DEAN ENTERPRISES	N	M
LIQUORS UNLIMITED	N	M
JORDANS KWIK STOP INC	N	F
JORDANS KWIK STOP INC	N	F





KUM & GO LLC	N	M
KUM & GO LLC	N	M
KUM & GO LLC	N	M
KUM & GO LLC	N	M
TRISTAR ENTERPRISES INC	N	M
DCCP INC	N	M
DCCP INC	N	M
DCCP INC	N	M
TOBACCO SUPERSTORE INC	N	M
TOBACCO SUPERSTORE INC	N	M
TOBACCO SUPERSTORE INC	N	M
TOBACCO SUPERSTORE INC	N	M
TOBACCO SUPERSTORE INC	N	M
TOBACCO SUPERSTORE INC	N	M
TOBACCO SUPERSTORE INC	N	M
TOBACCO SUPERSTORE INC	N	M
MIDSTATE DISTRIBUTING INC	Y; ASIAN	M
PORTER'S INC	N	M
M & J INC	N	F
VINEYARD PLUS OF NE ARKANSAS INC	N	M
MARGARET WALKER	N	F
	Y;	
HWY 66 COUNTRY MART	AMERICAN	F
	Y;	
HOLIDAY HILLS GROCERY	AMERICAN	F
LAWRENCE YOUNG ENTERPRISES INC	N	M
LAWRENCE YOUNG ENTERPRISES INC	N	M
LAWRENCE YOUNG ENTERPRISES INC	N	M
LAWRENCE YOUNG ENTERPRISES INC	N	M
LAWRENCE YOUNG ENTERPRISES INC	N	M
	Y;	
B & J LLC	AMERICAN	F
FREEMAN OIL CO	N	M
	Y;	
THE GOLFING DOG GROUP LLC	AMERICAN	F
PRATT'S AUTO SALVAGE INC	N	M
THE CROW'S NEST	N	M
RYAN'S GROCERY	N	M
TRIPLE L LIQUOR INC	N	M
ACE LIQUOR STORE	Y; ASIAN	M
SAVE-A-BUCK GRO & DOLLAR	Y; ASIAN	F
GUNN'S SUPERMARKETS, INC	N	M
GUNN'S SUPERMARKETS, INC	N	M
OLD RIVER PACKAGE STORE	N	F







J P FLASH INC	N	F
J P FLASH INC	N	F
J P FLASH INC	N	F
J P FLASH INC	N	F
HIGHLAND OIL INC	N	M
JAMES FLOYD WHITE	Y; AMERICAN	F
J & M ENTERTAINMENT	N	M
P P S COMPANY	N	M
P P S COMPANY	N	M
P P S COMPANY	N	M
P P S COMPANY	N	M
P P S COMPANY	N	M
P P S COMPANY	N	M
P P S COMPANY	N	M
P P S COMPANY	N	M
P P S COMPANY	N	M
MARTINS GROCERY & DELI INC	N	M
NIMOCKS OIL CO INC	N	M
YOUNG MAN KWON	Y; ASIAN	M
ROBERT PAUL CROCKETT	N	M
RICK ROOK	N	M
GOODMAN'S GROCERY INC	N	M
BENNY & KATHY TOLBERT	N	M
HOLLAND VENTURES INC	N	M
JUDY HENDERSON	N	F
JIM XIAO-HAN GO		
BLYTHVILLE LIQUOR INC		
MACKS LIQUOR STORE INC		
SAVINGS INC	N	M
DODGE OIL COMPANY OF ARKANSAS	N	M
DODGE OIL COMPANY OF ARKANSAS	N	M
BARRY'S MAIN STREET BAR & GRILL INC	N	M
H & N STORES INC	N	M
H & N STORES INC	N	M
BIG D'S ONE STOP INC	N	M
PETER W SKROCK	N	M
TOBACCO SUPERSTORE INC	N	M
TOBACCO SUPERSTORE INC	N	M
TOBACCO SUPERSTORE INC	N	M
DCCP INC	N	M
SHARON GAMBLIN	N	F
REBEL STATION INC		M

GOODMAN'S TOBACCO & MORE INC		F
RINKY DINK INC		
DENISE DAVENPORT		F
DIAMOND HOSPITALITY ENTERPRISES LLC		M
LEACHVILLE CONVENIENCE INC		M
GIANT OIL COMPANY OF ARKANSAS INC		M
TRANSCONTINENTAL MANAGEMENT & MARKETING INC		M
BHT INVESTMENT CO INC	N	M
BHT INVESTMENT CO INC	N	M
BHT INVESTMENT CO INC	N	M
BHT INVESTMENT CO INC	N	M
BHT INVESTMENT CO INC	N	M
BHT INVESTMENT CO INC	N	M
BHT INVESTMENT CO INC	N	M
BHT INVESTMENT CO INC	N	M
BHT INVESTMENT CO INC	N	M
Y GROCERY AND GAS INC		
COLLIER-WRIGHT, LLC		
MIDTOWN LIQUOR STORE INC		
ALF'S INC		
ALF'S INC		
NARAYAN		
PRAMUKHRUPA		
PRAYOSA		
IWAY TECH SOLUTIONS INC		
WAREHOUSE LIQUOR OF BAXTER CO INC		
REGON PETERSON		
HILARIO HUERTU		
CALVIN YOUNG		
AUTO CREDIT CORPORATION OF JONESBORO INC		
DEAN BAKER DISCOUNT GROCERY INC		
WADE SMITH		
BENNY'S COUNTRY STORE LLC		
M & J VENTURES INC LLC		
DONALD JONES ONE STOP		
ARVAL HOLING INC		
SUPERMARKET SUCCESS LLC		
BONDS GROCERY STORE LLC		
DUNKLIN C STORES LLC		
DANNY'S SILVER BULLET		M
GARY FARRIS		M (WHITE)
AMEEN ALI ALMINTOSER		M (WHITE)
TAT WONG		M

WILLIAM LEE BOYD		
TLC CONVENIENCE STORE LLC	N	
VINOD KAJI	Y	
EDWARD R GEORGE		
ELM STREET LIQUOR INC		
SDM PAWNBROKERS INC		
DB TOBACCO SHOPPE OF CABOT LLC		
PCL CORPORATION		
MAJESTIC LIQUOR LLC	Y	F (WHITE)
OVERMAN ENTERPRISES INC		M (WHITE)
ELGIN LIQUOR INC		M (WHITE)
THE CASTAWAYS RESORT INC		M (WHITE)
FRONTIER COMPUTER SOLUTIONS INC	Y	F (WHITE)
RED MULE INC		F (WHITE)
GATEWAY MARKETING INC		M (WHITE)
GATEWAY MARKETING INC		M (WHITE)
GATEWAY MARKETING INC		M (WHITE)
GATEWAY MARKETING INC		M (WHITE)
GATEWAY MARKETING INC		M (WHITE)
MFA PETROLEUM COMPANY	N	M (WHITE)
D&C INC.	N	M (WHITE)
K.P NANJI INC	Y	M (ASIAN)
STAR OF ARKANSAS INC	Y	M (ASIAN)
STAR ENTERPRISES OF ARKANSAS INC	Y	M (ASIAN)
MICRO VENTURE INC	Y	M (ASIAN)
MINNY INC	N	M (AFRICAN)
GENE STIMSON'S OF ARKANSAS INC	N	M (WHITE)
GENE STIMSON'S OF ARKANSAS INC	N	M (WHITE)
KENNEMORE HOME IMPROVEMENT, INC	N	M (WHITE)
FADEL A&M CORPORATION	N	
WALKER STREET GROCERY	N	M (WHITE)
E. & M. JENKINS, INC	N	M (WHITE)
LEE'S SPIRIT WORLD	N	M (WHITE)
BEECH GROVE ONE STOP INC	N	M (WHITE)
SAMAHER LLC	N	M (ASIAN)
NINAR LLC	N	M (ASIAN)
FLASH MARKET	Y	M (ASIAN)
BOWLES LIQUOR STORE	N	F (WHITE)
TOWN AND COUNTRY DISCOUNT FOODS INC	N	M (WHITE)
MARY FARMER	Y	F (WHITE)
R & R COUNTRYSIDE PACKAGE STORE	N	M (WHITE)
SUSIE DARLENE COCKRELL	Y	F (WHITE)
L S LITTLEFILED	N	M (WHITE)

LAFONCE LATHAM	Y	M (BLACK)
SERVGAS SUDDEN SERVICE LLC	N	M
RICE BOWLING CENTER OF STUTTGART, INC	Y	F (WHITE)
TAMMY PATIN	Y	F (WHITE)
MAX MART #15 INC	N	M (WHITE)
GREG AURELI INC	N	M (WHITE)
SHARON LEWIS	Y	F (WHITE)
BETTY D BOLES	Y	F (WHITE)
EAST ARK LIQUID ASSETS INC	N	M (WHITE)
CINDY GUESS	Y	F (WHITE)
ABDELAZIZ ASAD	Y	M (ASIAN)
THE PIGGOTT DINER INC	N	F (WHITE)
RLS INC	Y	F (WHITE)
UNIVERSITY MARKET INC	Y	M (ASIAN)
DOWNTOWN EXPRESS MART INC	Y	M (ASIAN)
LENNETTE MELTON	Y	F (WHITE)
GLENDA CHRISTIAN	Y	F (WHITE)
JEFFERY OSWALT		M (WHITE)
CHRISTOPHER EARNEST	Y	M (BLACK)
KROGER LIMITED PARTNERSHIP	N/A	
KROGER LIMITED PARTNERSHIP	N/A	
KROGER LIMITED PARTNERSHIP	N/A	
KROGER LIMITED PARTNERSHIP	N/A	
KROGER LIMITED PARTNERSHIP	N/A	
KROGER LIMITED PARTNERSHIP	N/A	
KROGER LIMITED PARTNERSHIP	N/A	
KROGER LIMITED PARTNERSHIP	N/A	
KROGER LIMITED PARTNERSHIP	N/A	
KROGER LIMITED PARTNERSHIP	N/A	
KROGER LIMITED PARTNERSHIP	N/A	
KROGER LIMITED PARTNERSHIP	N/A	
KROGER LIMITED PARTNERSHIP	N/A	
KROGER LIMITED PARTNERSHIP	N/A	
GLENDA S. KELLY	Y	F (WHITE)
DARRELL RAY MITCHELL		
SHORTSTOP ENTERPRIZES INC	N	M(WHITE)
DETCO INC	Y	F(WHITE)
CHARLIE FARMER		
ROBERT NOVAK		
B & P RENTAL PROPERTIES INC		
CHARLIE YOUNG	N	M(ASIAN)
JORDANS KWIK STOP INC	N	
JORDANS KWIK STOP INC	N	
THE LIQUOR STORE OF BRINKLEY INC.	N	

IN & OUT CONVENIENCE STORES, INC	Y	F(WHITE)
IN & OUT CONVENIENCE STORES, INC	Y	F(WHITE)
PILOT TRAVEL CENTERS LLC	N	
PILOT TRAVEL CENTERS LLC	N	
HOWARD BASS	N	
KC GAS MARKET INC #1	N	
KC GAS MARKET INC #2	N	
MIRANDAS VIDEO	N	
WAQUAR SALIM	Y	M(ASIAN)
SCOTT EDWARDS	N	
KULDIP KHATRAO	Y	M(ASIAN)
BILLY JOE PIPKIN	N	
PRAIRIE FARMERS ASSOCIATION	N	

PALARM CREEK LIQUOR INC	N	M(WHITE)
V INTERNATIONAL INC	N	ASIAN
V INTERNATIONAL INC	Y	ASIAN
LEE SHELL [AND 200077]	N	
GARDNER OIL CO INC	N	M
GARDNER OIL CO INC	N	M
GARDNER OIL CO INC	N	M
GARDNER OIL CO INC	N	M
GARDNER OIL CO INC	N	M
GARDNER OIL CO INC	N	M
GARDNER OIL CO INC	N	M
GARDNER OIL CO INC	N	M
THOMAS PETROLEUM INC	N	
IROSAM INC	Y	F(ASIAN)
COUNTRY LIQUOR INC	N	M(WHITE)
JENNEY J CORP	Y	F(ASIAN)





MURPHY OIL USA, INC.	N	F(WHITE)
MURPHY OIL USA, INC.	N	F(WHITE)
GAILEY OIL INC	N	M(WHITE)
LDCARTER INC	N	M(WHITE)
J & J MART INC	N	F(WHITE)
KET ENTERPRISES INC	Y	F(WHITE)
LEE'S MART INC	Y	M(ASIAN)
STTS INC	N	M
TRANTINA ON STOP LLC	N	M
KIM'S PRICE RITE	N	F(ASIAN)
MIR & SHAH INC	N	
J P FLASH INC	N	
J P FLASH INC	N	
J P FLASH INC	N	
CRUISE INC	Y	ASIAN
PARAGON INC	Y	ASIAN
PARAGON INC	Y	ASIAN
MARKHAM STREET LIQUOR STORE INC	N	M(ASIAN)
ROOSEVELT IN AND OUT	N	M(ASIAN)
ALFORD TOBACCO INC	N	M ©
EXTRA STOP INC	N	M(ASIAN)
ALFORD TOBACCO INC	N	M©
T G ENTERPRISES LLC	N	M
HANDI PANTRY INC	N	M
MARTY'S DELI MEAT GROCERY	Y	F(ASIAN)
COME N GITIT	Y	F(AMERICAN WOMAN)
ED & KAY'S RESTAURANT	Y	F(AMERICAN WOMAN)
TRAILA INC		F(WHITE)
MCK LLC	N	
HOLLIS COUNTRY STORE	N	F(WHITE)
SHREE BAHUCHAR AMBICA INC	N	M(ASIAN)
B & B FINANCIAL INC	N	M
M M SATTERFIELD OIL CO	N	F(WHITE)
M M SATTERFIELD OIL CO	N	F(WHITE)
M M SATTERFIELD OIL CO	N	F(WHITE)
M M SATTERFIELD OIL CO	N	F(WHITE)
JOE'S GROCERY & DELI	N	F(O)
COULSON OIL GROUP	N	
OZARK CONV SERVICES CORP	Y	ASIAN
PAYLESS TOBACCO	N	M(WHITE)
HEK INC	N	
TOBACCO SUPERSTORE INC	N	
TOBACCO SUPERSTORE INC	N	

TOBACCO SUPERSTORE INC	N	
TOBACCO SUPERSTORE INC	N	
NICK NOLL	N	M(WHITE)
MKL INVESTMENTS INC		F(ASIAN)
MKL INVESTMENTS INC		F(ASIAN)
JAMES C SHIRLEY	N	
BASHAR GANI	N	
THE GROVE C STORE INC	Y	F(WHITE)
R & K MARKETING INC	N	M
MASTERTECH OF ARKANSAS INC	N	M
MASTERTECH OF ARKANSAS INC	N	M
MASTERTECH OF ARKANSAS INC	N	M
MASTERTECH OF ARKANSAS INC	N	M
YEIJIN CORP	N	M(ASIAN)
JENNY MART	N	F(ASIAN)
KATHY JOHNSTON	Y	F(WHITE)
PHILLIPS 66	Y	F(ASIAN)
HAN CHO INC		M(ASIAN)
	N	M
MERCADO SAN JOSE	Y	M(HISPANIC)
B & K HALEY ENTERPRISE	Y	F(WHITE)
PATTON 1 STOP & DELI INC	N	M(WHITE)
J & C ONE STOP SERVICE INC	Y	M(ASIAN)
CHASE INC	N	F
PINNACLE VALLEY LIQUOR INC	N	M(WHITE)
TWO DOLLAR ENTERPRISES INC	N	M(WHITE)
YOUN SOO HAN	N	M(ASIAN)
ALL ROCKETS MOTORS, LTD	N	M(WHITE)
IK SO OH	Y	M(KOREAN)
DCEW INC	N	
CURVE LIQUOR STORE	Y	M(NATIVE)
MADHU INC	N	
CLOVERDALE LIQUOR INC	N	M(WHITE)
S & K SUPER INC	Y	M(ASIAN)
CLOVERDALE TOBACCO LLC	N	M
UNCLE ABES - PHILLIP 66	N	M(WHITE)
J JAY INC	Y	M(ASIAN)
COLONEL GLENN GROCERY	N	F(WHITE)
J-SQUARE INC	N	M(ASIAN)
AN & M ARKANSAS INC	N	F(ASIAN)
MUHAMMED MIAN		M(ASIAN)
ALL STAR TRAVEL PLAZA INC	Y	M(ASIAN)
MAUMELLE CREEK INC	N	M(WHITE)

MS & D OF ARKANSAS INC	N	F(ASIAN)
ACC OF LITTLE ROCK INC	N	M(WHITE)
FLASH MARKET INC	N	M(WHITE)
FLASH MARKET INC	N	M(WHITE)
FLASH MARKET INC	N	M(WHITE)
FLASH MARKET INC	N	M(WHITE)
FLASH MARKET INC	N	M(WHITE)
FLASH MARKET INC	N	M(WHITE)
HEBER SPRING WHOLESALE GROCERY INC	N	M(WHITE)
HEBER SPRING WHOLESALE GROCERY INC	N	M(WHITE)
HEBER SPRING WHOLESALE GROCERY INC	N	M(WHITE)
RHONDA SUE BRYANT	N	F(WHITE)
PAUL JAMES	N	
DIANNA EMERY	Y	F(WHITE)
LIM'S COUNTRY CORNER INC	N	F(ASIAN)
J R LIQUOR INC		F(WHITE)
JB SPIRITS INC	N	F(WHITE)
J D TIRE & SERVICE	N	F(WHITE)
TOBACCO WORLD OF CLINTON INC	N	M(WHITE)
MKL INVESTMENTS INC	Y	F(ASIAN)
DR CLEAN	N	
APS INVESTMENTS LLC	Y	M(ASIAN)
PUMPS FOODMART INC	N	
NASH INC		
NASH INC		
YKH INC	Y	M(ASIAN)
OZ INDUSTRY INC	Y	M(ASIAN)
LONGSHOT LIQUOR INC	N	M
ZIMMERMANS ENTERPRISES LLC	Y	M(WHITE)
BARROW NEIGHBORHOOD SUPPLY STORE	Y	F(AFRICAN)
BROOKS BAILEY ENTERPRISES	N	M(WHITE)
BESTBE INC	N	M(ASIAN)
FIRST STOP PAWN & LOAN INC	N	M(WHITE)
JOHN GOINS	Y	M(AFRICIAN)
MKL INVESTMENTS INC	N	F(ASIAN)
STAGECOACH GROCERY INC	N	M
SH CORPORATION	Y	M(ASIAN)
WEST 12TH ST MARKET	N	F(ASIAN)
LANCE HICKS	N	M(WHITE)
MAHER B BISHARA	N	M(WHITE)
THREE GUYS INC	N	M(WHITE)
THREE GUYS INC	N	M(WHITE)
PERRY COUNTY FOOD & DRUG	N	M(WHITE)

T & C WATSON INC	N	M(WHITE)
TOBACCO TOWN INC	Y	F(WHITE)
TOBACCO TOWN INC	Y	F(WHITE)
J & P FLASH INC	N	
J & P FLASH INC	N	
GANA FOOD MART INC	Y	M(ASIAN)
P P S COMPANY	N	M(WHITE)
P P S COMPANY	N	M(WHITE)
KIMBERLY HUGHES	Y	F(WHITE)
SHEETAL USA ENTERPRISES INC		F(U)
ZOE VIEFHAUS	N	F(WHITE)
COLONIAL BOTTLE SHOP INC	N	M(WHITE)
CHAE ENTERPRISES INC	Y	M(KOREAN)
SAVINGS INC		
HOLY SMOKES TOBACCO SHOP INC	N	
D & J ENTERPRISES INC	Y	F(ASIAN)
ERNEST DEAN	N	M(WHITE)
KEONG SUK SON		M(KOREAN)
K & Y FOODMART INC	Y	M(ASIAN)
HAROLDS INC	N	
TOBACCO SUPERSTORE INC	N	
TOBACCO SUPERSTORE INC	N	
TOBACCO SUPERSTORE INC	N	
TOBACCO SUPERSTORE INC	N	
TOBACCO SUPERSTORE INC	N	
BBL OIL COMPANY LLC	N	M(WHITE)
BBL OIL COMPANY LLC	N	M(WHITE)
BBL OIL COMPANY LLC	N	M(WHITE)
YOP INC	Y	F(ASIAN)
TEXACO ONE STOP INC	N	M(WHITE)
TEXACO ONE STOP INC	N	M(WHITE)
RICHARD JONES	N	M(WHITE)
KAMELI LLC	N	
KAMELI LLC	N	M(ASIAN)
PHILLIPS 66 #44 LLC	N	
D L SHAW INC	Y	F
BAH ENTERPRISES	N	
STINGRAY ENTERPRISES INC	N	
ARCH STREET GROCERY	N	M(WHITE)
YOUNG KIM	N	M(KOREAN)
EUN LEE SHIN	Y	F(ASIAN)
OAK STREET VALERO LLC	N	
OAK STREET VALERO LLC	N	







SUMMERWOOD PARTNERS, LLC	N	M(WHITE)
SUMMERWOOD PARTNERS, LLC	N	M(WHITE)
SUMMERWOOD PARTNERS, LLC	N	M(WHITE)
SUMMERWOOD PARTNERS, LLC	N	M(WHITE)
SUMMERWOOD PARTNERS, LLC	N	M(WHITE)
SUMMERWOOD PARTNERS, LLC	N	M(WHITE)
SUMMERWOOD PARTNERS, LLC	N	M(WHITE)
SUMMERWOOD PARTNERS, LLC	N	M(WHITE)
SUMMERWOOD PARTNERS, LLC	N	M(WHITE)
MARY'S LIQUOR STORE	Y	M(AFRICIAN)
STOP ONE FOOD MART	Y	M(ASIAN)
CJ'S COUNTRY MARKET	N	M(WHITE)
RUPLES LIQUOR 4 LESS INC.	N	M(WHITE)
SOUTH MAPLE GROCERY	Y	M(AFRICIAN)
BOWMAN ROAD BEVERAGE, SW PACKAGE	N	F(WHITE)
R & V INVESTMENTS LLC	N	F(WHITE)
BORDERLINE ENTERPRISES, INC	Y	M(ASIAN)
BORDERLINE ENTERPRISES, INC	Y	M(ASIAN)
BORDERLINE ENTERPRISES, INC	Y	M(ASIAN)
BORDERLINE ENTERPRISES, INC	Y	M(ASIAN)
BORDERLINE ENTERPRISES, INC	Y	M(ASIAN)
FRATERNAL ORDER OF EAGLES #60	N	M (WHITE)
DICKSON LLC		M (WHITE)
SWAP'S COUNTRY STORE, LLC	N	M (WHITE)
FERNDAL GROCERY, INC	Y	F (WHITE)
KWICK PANTRY INC	Y	M (WHITE)
FAST MART INC	Y	M (WHITE)
FAST MART INC	Y	M (WHITE)
SUPERMERCADO SIN FRONTERAS INC	Y	M (WHITE)
TERRY'S CONOCO	Y	M (AFRICAN)
MIRAJ INC	Y	M (ASIAN)
MIRAJ 2 INC	Y	M (ASIAN)
ALBRIGHT ENTERPRISES, INC	N	M (WHITE)
ALBRIGHT TIRE AND AUTO CENTER, INC	N	M (WHITE)
THOMAS L MAJORS	N	F(WHITE)
SHRI VAIBHAV LAXMI INC	Y	F(INDIAN)
TJ 'S COUNTRY STORE, INC	N	F(WHITE)
VALERIE MACENTEE	Y	F(WHITE)
AMERINC CORP	N	M(WHITE)
H & D MINI MART INC	Y	M(ASIAN)
S MURTHY LLC	Y	M(ASIAN)
HASPER LLC	N	M(ASIAN)
FARMANA LLC	N	M(ASIAN)



HILLCREST LIQUOR AND FINE WINES, INC	Y	F(WHITE)
918 LLC	Y	M(ASIAN)
MAUMELL ON THE GO	N	
GOLDSTAR 1 LLC	Y	F(ASIAN)
KATTOM BROTHER ENTERPRISE, INC	N	M(WHITE)
GRAY-VAN, INC	N	M(WHITE)
WHITE'S I-30 LIQUOR/DEBORAH A WHITE	Y	F(WHITE)
BEC ENTERPRISES	N	M(WHITE)
EAST GATE SHELL #643		
HBK ENT INC	Y	F (ASIAN)
DONNIE MILLER	N	M (WHITE)
LBJ	Y	F (WHITE)
DONNIE MILLER	N	M (WHITE)
KUM J KIL - CITGO 5	N	F(ASIAN)
Y S MART, INC	N	M(ASIAN)
USA GAS INC	Y	M(ASIAN)
EVERETT G STARR JR. LLC		M(WHITE)
S N FUEL STOP LLC	Y	F(ASIAN)
KR FUEL LLC	Y	F(ASIAN)
KH FUEL LLC	Y	F(ASIAN)
KZ FUEL LLC	Y	F(ASIAN)
J & K INC	N	F(ASIAN)
SARDINIA, LLC	N	M (ASIAN)
LEVY SUPER MART	Y	M(ASIAN)
BIGELOW DINER & STORE LLC	N	M(WHITE)
AKATEEN INC	Y	F(ASIAN)
LAPERLA	Y	M(HISPANIC)
COUNTYLINE SUPERSTOP	N	M(WHITE)
PATTI SELLE	Y	F(WHITE)
KYUNG S. HA	Y	F(ASIAN)
BENRO LLC		M(HISPANIC)
BROWN & TRAUGO H	N	F(WHITE)
SUPERSTOP #50	N	M(WHITE)
FASHION CITY	Y	F(ASIAN)
JAMES A CRAIG	N	M (WHITE)
FANTASY FASHIONS INC	Y	F (WHITE)
CLEVELAND GROCERY INC	Y	F(WHITE)
BIRDWELL ENTERPRISES INC	N	M (WHITE)
H & R FUEL INC	Y	M(ASIAN)
LOVEMEET LLC	Y	M(ASIAN)
DOROTHY HUMPHREY	Y	F(BLACK)
KROGER LIMITED PARTNERSHIP	N/A	
KROGER LIMITED PARTNERSHIP	N/A	



PILOT TRAVEL CENTERS LLC  
M & M SUPER STOP

N  
N

DVJ ENTERPRIZES INC

N

M(WHITE)

DVJ ENTERPRIZES INC

N

M(WHITE)

DVJ ENTERPRIZES INC

N

M(WHITE)

GARDNER OIL CO INC

Y

M

RADHE INC

F(ASIAN)

ASHA INC

N

M(INDIAN)

BAKULA & RAKESH INC

N

M(ASIAN)

REETIK INC

M(ASIAN)

ASHI INC

N

M(ASIAN)

SINGH ENTERPRISES INC

Y

M(ASIAN)

EZ MART INC

Y

F(WHITE)

EZ MART INC

Y

F(WHITE)

EZ MART INC

Y

F(WHITE)

EZ MART INC

Y

F(WHITE)

EZ MART INC

Y

F(WHITE)

EZ MART INC

Y

F(WHITE)

EZ MART INC

Y

F(WHITE)

EZ MART INC

Y

F(WHITE)

EZ MART INC

Y

F(WHITE)

EZ MART INC

Y

F(WHITE)

EZ MART INC

Y

F(WHITE)

EZ MART INC

Y

F(WHITE)

EZ MART INC

Y

F(WHITE)

EZ MART INC

Y

F(WHITE)

EZ MART INC

Y

F(WHITE)

EZ MART INC

Y

F(WHITE)

EZ MART INC

Y

F(WHITE)

EZ MART INC

Y

F(WHITE)

EZ MART INC

Y

F(WHITE)

EZ MART INC

Y

F(WHITE)

EZ MART INC

Y

F(WHITE)

EZ MART INC	Y	F(WHITE)
EZ MART INC	Y	F(WHITE)
EZ MART INC	Y	F(WHITE)
EZ MART INC	Y	F(WHITE)
EZ MART INC	Y	F(WHITE)
EZ MART INC	Y	F(WHITE)
EZ MART INC	Y	F(WHITE)
EZ MART INC	Y	F(WHITE)
EZ MART INC	Y	F(WHITE)
EZ MART INC	Y	F(WHITE)
EZ MART INC	Y	F(WHITE)
EZ MART INC	Y	F(WHITE)
EZ MART INC	Y	F(WHITE)
EZ MART INC	Y	F(WHITE)
FRANK GRIFFIN OIL INC	N	M(WHITE)
FRANK GRIFFIN OIL INC	N	M(WHITE)
FRANK GRIFFIN OIL INC	N	M(WHITE)
FRANK GRIFFIN OIL INC	N	M(WHITE)
FRANK GRIFFIN OIL INC	N	M(WHITE)
FRANK GRIFFIN OIL INC	N	M(WHITE)
FRANK GRIFFIN OIL INC	N	M(WHITE)
FRANK GRIFFIN OIL INC	N	M(WHITE)
FRANK GRIFFIN OIL INC	N	M(WHITE)
FRANK GRIFFIN OIL INC	N	M(WHITE)
FRANK GRIFFIN OIL INC	N	M(WHITE)
FRANK GRIFFIN OIL INC	N	M(WHITE)
MR KAT INC		M(WHITE)
ALMA MINI MART INC	N	M(WHITE)
HTC LLC		M(WHITE)
CIRCLE M	N	
EXIT 57 AUTO TRUCK EXPRESS	N	M(WHITE)
DISTILLERY LIQUOR OF FS LLC	N	M(WHITE)
Y & E SUPERSTOP INC	Y	F(ASIAN)
G & Y SUPER STOP	N	m(KOREAN)
CHANA'S CORNER INC	Y	F(WHITE)
PMD INC	Y	
JNJ ENTERPRISES INC	N	M(WHITE)
KGB LLC		
BOB'S MARKET INC	N	
PIC N TOTE STORES INC	N	M(WHITE)
PIC N TOTE STORES INC	N	M(WHITE)
PIC N TOTE STORES INC	N	M(WHITE)
PIC N TOTE STORES INC	N	M(WHITE)
PIC N TOTE STORES INC	N	M(WHITE)

PIC N TOTE STORES INC	N	M(WHITE)
SILVERBRIDGE TRUCK PLAZA INC	N	
MARJA ENTERPRISES LLC	N	M(WHITE)
ROSE STOP INC	Y	M(WHITE)
MURPHY OIL USA, INC.	N	F(WHITE)
MURPHY OIL USA, INC.	N	F(WHITE)
MURPHY OIL USA, INC.	N	F(WHITE)
MURPHY OIL USA, INC.	N	F(WHITE)
MURPHY OIL USA, INC.	N	F(WHITE)
MURPHY OIL USA, INC.	N	F(WHITE)
MURPHY OIL USA, INC.	N	F(WHITE)
MURPHY OIL USA, INC.	N	F(WHITE)
MURPHY OIL USA, INC.	N	F(WHITE)
MURPHY OIL USA, INC.	N	F(WHITE)
MURPHY OIL USA, INC.	N	F(WHITE)
MURPHY OIL USA, INC.	N	F(WHITE)
MURPHY OIL USA, INC.	N	F(WHITE)
MURPHY OIL USA, INC.	N	F(WHITE)
MURPHY OIL USA, INC.	N	F(WHITE)
MURPHY OIL USA, INC.	N	F(WHITE)
MURPHY OIL USA, INC.	N	F(WHITE)
PETROMARK, INC	N	M(WHITE)
PETROMARK, INC	N	M(WHITE)
PETROMARK, INC	N	M(WHITE)
PETROMARK, INC	N	M(WHITE)
PETROMARK, INC	N	M(WHITE)
PETROMARK, INC	N	M(WHITE)
PETROMARK, INC	N	M(WHITE)
PETROMARK, INC	N	M(WHITE)
PETROMARK, INC	N	M(WHITE)
PETROMARK, INC	N	M(WHITE)
PETROMARK, INC	N	M(WHITE)
PETROMARK, INC	N	M(WHITE)
PETROMARK, INC	N	M(WHITE)
PETROMARK, INC	N	M(WHITE)
PETROMARK, INC	N	M(WHITE)
PETROMARK, INC	N	M(WHITE)
PETROMARK, INC	N	M(WHITE)
PETROMARK, INC	N	M(WHITE)
PETROMARK, INC	N	M(WHITE)
PETROMARK, INC	N	M(WHITE)
OZARK FUELS LLC	N	M(WHITE)
CROSSOVER STATION LLC	N	M(WHITE)
PETROMARK, INC	N	M(WHITE)
PETROMARK, INC	N	M(WHITE)
WEST ARK OIL COMPANY	N	M(WHITE)
KAREN ENTERPRISES INC	Y	M(ASIAN)

B & J COLE FOOD STORES INC	N	M(WHITE)
B & J COLE FOOD STORES INC	N	M(WHITE)
BEELS YELLVILLE QUICKSTOP	N	F(WHITE)
L & T SUPERSTOP LLC	N	M(WHITE)
WEST ARK OIL COMPANY	N	
MASU INC	Y	
MM BARTHOLOMEW INC	N	
POWELLS ONE STOP	N	M(WHITE)
C & J'S QUICK STOP	N	F(WHITE)
J P FLASH INC	N	
J P FLASH INC	N	
WEDINGTON LIQUOR OF FAYETTEVILLE	N	M(WHITE)
MS CITY LIQUOR INC	N	
RUBY 25 INC	Y	F(ASIAN)
LIPE & GARNER INC	N	
COOPER HOME INC	N	F(WHITE)
BRAICH INVESTMENT INC	Y	M(ASIAN)
VALENTINI ENTERPRISES INC	N	M(WHITE)
HOUSTON DICKERSON & DICKERSON INC	N	M(WHITE)
KUM & GO LLC	N	M(WHITE)
KUM & GO LLC	N	M(WHITE)
KUM & GO LLC	N	M(WHITE)
KUM & GO LLC	N	M(WHITE)
CHIEFTAIN CORP	N	M(WHITE)
CHIEFTAIN CORP	N	M(WHITE)
KUM & GO LLC	N	M(WHITE)
KUM & GO LLC	N	M(WHITE)
KUM & GO LLC	N	M(WHITE)
KUM & GO LLC	N	M(WHITE)
KUM & GO LLC	N	M(WHITE)
KUM & GO LLC	N	M(WHITE)
KUM & GO LLC	N	M(WHITE)
KUM & GO LLC	N	M(WHITE)
KUM & GO LLC	N	M(WHITE)
POINTER EXPRESS INC	N	F(WHITE)
SHARON DAVIDSON	Y	F(WHITE)
TOBACCO SUPERSTORE INC	N	
TOBACCO SUPERSTORE INC	N	
TOBACCO SUPERSTORE INC	N	
TOBACCO SUPERSTORE INC	N	
TOBACCO SUPERSTORE INC	N	
ROSS WINTON	N	M(WHITE)
412 EXPRESS INC	N	F(WHITE)
BERRYVILLE MERCANTILE CO INC	N	

S & S SUPERSTOP INC	N	M(WHITE)
71 SOUTH WINE AND SPIRITS LLC	N	M(WHITE)
GRAND CENTRAL STORAGE INC	N	F(WHITE)
DAITHE-ALPINE LIQUOR CENTER	N	M(WHITE)
S & J LODGING	Y	M(ASIAN)
HURT'S SUPERETTE INC	N	M(WHITE)
SINGH & SINGH LLC	N	F(ASIAN)
PEVEHOUSE INC	N	M(WHITE)
CHESTER MERCANTILE	N	
BEAR JACK INC	Y	F(WHITE)
AVOCA ONE STOP INC	N	M(WHITE)
H & S ENTERPRISES OF SPRINGDALE	N	M(WHITE)
AAI INC	N	M(ASIAN)
THE BEAR TREE GIFT SHOP & TANNING SALON		
ZERO MART INC	N	
WSD INC	Y	M(WHITE)
WILD BILL ENTERPRISES	N	M(WHITE)
WILD BILL ENTERPRISES	N	F(WHITE)
SHARMA ENTERPRISES	Y	F(ASIAN)
LINMAR INC	N	
MARLIN INC	N	
JACKIE REED	N	F(WHITE)
LND PARTNERSHIP	N	
SIMMONS INC	N	M(WHITE)
AL'S FAST TRAX INC	N	M(HISP)
LARRY'S SUPERSTOP INC	N	M(WHITE)
JAYSHIV, INC	N	
B.M.G INC	N	F(ASIAN)
BRAR & SONS	N	M(INDIAN)
WIGGY'S CONVENIENCE, INC	N	M(WHITE)
WESTAR ENTERPRISES, LLC	N	
DEYCO, INC	N	
WAYMON BARTON	N	
FUELS & SUPPLIES, INC	N	
AMERICAN #1 IIC	N	M(ASIAN)
RIVERVALLEY PAWN, INC	N	M(WHITE)
CHAT N SCAT	N	F(WHITE)
THONGSAMOUTH S VANSOUPHET	Y	M(ASIAN)
HEBER SPRINGS WHOLESALE GROCERY INC		
HEBER SPRINGS WHOLESALE GROCERY INC		
DAN HOLLOWELL		M(WHITE)
FLASH MARKET INC	N	M(WHITE)
FLASH MARKET INC	N	M(WHITE)

FLASH MARKET INC	N	M(WHITE)
FLASH MARKET INC	N	M(WHITE)
FLASH MARKET INC	N	M(WHITE)
FLASH MARKET INC	N	M(WHITE)
FLASH MARKET INC	N	M(WHITE)
FLASH MARKET INC	N	M(WHITE)
FLASH MARKET INC	N	M(WHITE)
FLASH MARKET INC	N	M(WHITE)
FLASH MARKET INC	N	M(WHITE)
FLASH MARKET INC	N	M(WHITE)
FLASH MARKET INC	N	M(WHITE)
FLASH MARKET INC	N	M(WHITE)
FLASH MARKET INC	N	M(WHITE)
FLASH MARKET INC	N	M(WHITE)
WESTAR ENTERPRISES, LLC	N	
GRACE ENERGY CORPORATION	N	
GRACE ENERGY CORPORATOIN	N	
GRACE ENERGY CORPORATOIN	N	
FINNEGAN'S COUNTRY MARKETS	N	M(WHITE)
POINTER TRAIL INC	N	
STANDRIDGE COUNTRY STORE, INC	N	
MACKIE'S ONE STOP	Y	M(ASIAN)
BEER BARN	N	F(WHITE)
BUFFALO GALS CAFÉ	N	M(WHITE)
GLOBAL IMPEX, INC	Y	M(WHITE)
STONECREEK INCORPORATED	N	
ALL OF PHOENIX VILLAGE, INC	N	
PIG TRAIL LIQUOR INC	N	F(WHITE)
RED BARN LIQUOR	N	
RIVERCLIFF GOLD, LLC	N	M(WHITE)
TSK BUSINESSESS, INC	N	M(WHITE)
TSK BUSINESSESS, INC	N	
TSK BUSINESSESS, INC	N	
TOBACCO TOWN INC	Y	F(WHITE)
TOBACCO TOWN INC	Y	F(WHITE)
TOBACCO TOWN INC	Y	F(WHITE)
TOBACCO TOWN INC	Y	F(WHITE)
TOBACCO TOWN INC	Y	F(WHITE)
KASANA INC	N	F(ASIAN)
DENNIS PEARSON	N	M(WHITE)
SARGENT'S 66 INC	N	M(WHITE)
EDWARDS STOP & STOP, INC	Y	F(WHITE)
STOUT'S HOME-STYLE COUNTRY STORE, INC	N	



RED X EXPRESS	Y	F
PARK MINI MART	Y	(NATIVE AMERICAN)
RON'S NSC INC	N	M(WHITE)
QUIK-A-WAY INC	N	
KEN'S STOP & SHOP INC	N	F(WHITE)
SSS ENTERPRISES, INC	N	M(WHITE)
SSS ENTERPRISES, INC	N	
ROBERT PAUL MONTGOMERY		M(WHITE)
WILLIAM PAYTON	N	
A TO Z PAWN, INC	N	M(WHITE)
SOUND & VISION, INC	N	
SHORT STOP CORNER, INC	N	
L.J'S LIQUORE. INC		
MEADORS MOTEL CO, LLC	Y	M(WHITE)
CHAD SMITH	N	
RON OR MARY REID	N	
MEADORS INN	Y	M(WHITE)
MICHAEL GREG SISCO	N	M(WHITE)
J MART - FT SMITH, LLC	N	M(U)
J MART - FT SMITH, LLC	N	
JAM INVESTMENTS, LLC	N	
JAM INVESTMENTS, LLC	N	
KINGS RIVER COUNTRY STORE, INC	N	
JAMES C CHEN	Y	ASIAN
SHERI WOOLMAN	Y	F
HARGIS FUEL ZONE, INC	N	
C-LITE, INC	N	
THIELE, INC	N	
ON THE BORDER LIQUOR, INC	N	
WIEDERKEHR WEINKELLER RESTAURANT, INC	N	
JEC INC	N	
GOLDLINE LLC	NO	F
GOLDLINE LLC	NO	F
BOBBY MORGAN	Y	M
JDF, INC	Y	F
SHELL SUPERSTOP #899	NO	M
RASNICK ENTERPRISES	Y	F
HIGHLAND STORE, LLC	NO	M
DRS ENTERPRISES, INC	NO	
ROSS WINTON	N	M(WHITE)
T-MART INC	NO	F
SPINZZZ CASINO LLC	Y	F
KNOXVILLE MARKET & GAS	NO	F

HIWAY 109 TRUCK PLAZA	NO	M
RICHARD F HADZIMA	NO	M
WALLI ENTERPRISES LLC	Y	F
FRANK SEATON	N	M(WHITE)
THOMAS MICHAEL RITCHIE	N	M(WHITE)
MCB'S CTOPLITE INC	N	F(WHITE)
JGM, INC	N	
LIQUOR MART, INC	N	M(WHITE)
HAGARVILLE GROCERY AND STATION	Y	F(WHITE)
HARTESSTON CORP	N	F(WHITE)
AMERICA # 1 LLC	N	M(ASIAN)
LARRY BINGAMAN	N	M(WHITE)
GUSTIN ENTERPRISES LLC	N	F
TOM'S PLACE	N	M
RIVERVIEW RESORT & COUNTRY STORE, INC	N	F
JSJL, INC	N	M(WHITE)
COUNTY LINE LIQUORS, INC	N	M(WHITE)
LAST CHANCE LIQUORS, INC	N	M(WHITE)
SUNSET LIQUORS, INC	N	M(WHITE)
CHEERS LIQUOR & WINE SHOPPE, INC	N	F
Y LIQUORS, INC	N	M(WHITE)
FIESTA LIQUORS, INC	N	M(WHITE)
HI-WAY LIQUORS	N	M(WHITE)
LIQUOR DEPOT, INC	N	M(WHITE)
MOVELAND BALLOONS & BEANS, INC	Y	M(WHITE)
SBAT, INC	Y	M(ASIAN)
RON ADAMS	N	M(WHITE)
ROXANNE NIXON	N	F(WHITE)
MIAN & SONS INC	N	M(ASIAN)
CHANNAN INC	N	M(ASIAN)
DANDY OIL COMPANY INC	N	
DANDY OIL COMPANY INC	N	
DANDY OIL COMPANY INC	N	
DANDY OIL COMPANY INC	N	
JIFFY MART	N	M(WHITE)
JIFFY MART	N	M(WHITE)
HOA TRAN	Y	M(ASIAN)
SUMMERS C STORE I, INC	N	
TONTITOWN Z MART, INC	N	M(WHITE)
EL PROGRESSO BAKERY	Y	F(HISPANIC)
SUPERMERCADO LA VILLITA INC	Y	M(HISP)
WESTERN GROVE GROCERY AND DELI		M(WHITE)
ANDERSON'S BROTHERS INC	N	M(WHITE)

ANDERSON'S BROTHERS INC	N	M(WHITE)
TIM WITCHE	NA	M (WHITE)
NEW AGE MOOSE INC	Y	F(NATIVE)
A TO Z PAWN, INC	N	M(WHITE)
RITA LONG COBLER	N	F(WHIATE
TURNEY ENTERPRISES INC	N	M
SCOTT A SOWELL	N	M(WHITE)
LIQUOR WORLD	N	M(WHITE)
DANNY VILLINES	N	M(WHITE)
AZHAR MIAN	N	M(ASIAN)
TIM BLACKBURN	N	M(WHITE)
SPEEDWAY LLC	Y	F(ASIAN)
ANTONIO ALMARAZ	Y	M(ASIAN)
RON LEWELLEN	N	M(WHITE)
RAJESH BHANOT	Y	M(ASIAN)
ASHLEY MCALPIN	N	F(WHITE)
RANDY JORDAN	N	M(WHITE)
JAMES R YAPLE	N	M(WHITE)
MIDLAND MARKET, INC	Y	F(ASIAN)
DARRELL SMITH	N	M(WHITE)
CHRISTOPHER WILSON	N	M(WHITE)
TONITOWN LIQUOR LLC	Y	F(WHITE)
BUNCH'S QUIK CHEK INC	N	M(WHITE)
TREE LINED DRIVE, LLC	N	M(WHITE)
GERALD SANDERS	NA	M(WHITE)
HOT SPOT CONNECTIONS, LLC	Y	F(WHITE)
THE WELL	N	M(WHITE)
DEBBIE PRICE	N	M(WHITE)
KROGER LIMITED PARTNERSHIP	N/A	
KROGER LIMITED PARTNERSHIP	N/A	
ALTERNATE INVESTMENTS INC	N	M(WHITE)
ANDERSONS GAS & PROPANE INC	N	M(WHITE)
ANDERSONS GAS & PROPANE INC	N	M(WHITE)
ANDERSONS GAS & PROPANE INC	N	M(WHITE)
ANDERSONS GAS & PROPANE INC	N	M(WHITE)
HARTESSTON CORP	N	F(WHITE)
NEW CHINA OF SILOAM SPRINGS INC	Y	M(ASIAN)
GATEWAY MARKETING INC		
POINT CONVENIENCE STORE INC	N	M(WHITE)





C.W.I.P INC	Y; AFRICAN	F
J.P.'S LIQUOR	N	M
CHAPEL R-N-FOODS	N	
VILLAGE NUTRUTION	N	M
PINE HILL LIQUOR	Y; AMERICAN	F
J & C DISCOUNT TOBACCO	Y; AMERICAN	F
CASH & SONS LP GAS CO	N	
CASH & SONS LP GAS CO	N	
CASH & SONS LP GAS CO	N	
JEEVAN SOMAIAH	Y; ASIAN	M
LIPSCOMB OIL CO	N	
LIPSCOMB OIL CO	N	
JERRY ALLEN ENTERPRISES	N	
NORTH JACKSON PLAZA	N	
MURPHY OIL USA, INC.	N	
MURPHY OIL USA, INC.	N	
MURPHY OIL USA, INC.	N	
MURPHY OIL USA, INC.	N	
MURPHY OIL USA, INC.	N	
MURPHY OIL USA, INC.	N	
MURPHY OIL USA, INC.	N	
MURPHY OIL USA, INC.	N	
MURPHY OIL USA, INC.	N	
MURPHY OIL USA, INC.	N	
MURPHY OIL USA, INC.	N	
MURPHY OIL USA, INC.	N	
MURPHY OIL USA, INC.	N	
MURPHY OIL USA, INC.	N	
MURPHY OIL USA, INC.	N	
MURPHY OIL USA, INC.	N	
MURPHY OIL USA, INC.	N	
E & M OIL COMPANY	N	M
E & M OIL COMPANY	N	M
E & M OIL COMPANY	N	M
E & M OIL COMPANY	N	M
E & M OIL COMPANY	N	M
WEST ARK OIL COMPANY	N	
QUICK CHEK FOOD MART	N	
JOLLY ROGER	N	
ROY'S PAWN SHOP	N	M
SURE SHOT ENTERPRISES INC	N	F
LIPSCOMB OIL CO	N	
FIESTA BOWL	N	M
COLLEGE HILL HARDWARE	N	M



SOUTH ARKANSAS OIL CO	N	M
SOUTH ARKANSAS OIL CO	N	M
SOUTH ARKANSAS OIL CO	N	M
SOUTH ARKANSAS OIL CO	N	M
SOUTH ARKANSAS OIL CO	N	M
SOUTH ARKANSAS OIL CO	N	M
H & M ROADMART INC	N	M
RONNY POUNDS	Y;NATIVE	M
FREEMAN OIL CO	N	
FREEMAN OIL CO	N	
FREEMAN OIL CO	N	
DILLARD'S SHELL SUPERSTOP	N	M
	Y;	
BECKY'S ONE STOP LLC	AMERICAN	F
C & N GROCERY INC	N	M
	Y;	
J & J DISCOUNT TOBACCO	AMERICAN	F
CIRCLE S FOOD STORES INC	N	M
CIRCLE S FOOD STORES INC	N	M
CIRCLE S FOOD STORES INC	N	M
	Y;	
G SHINES, LLC	AMERICAN	F
OHM SHREE RAM LLC	Y; ASIAN	M
	Y; U/	
ZAIMA ENTERPRISES LLC	OTHER	M
SCOTTY'S CONVENIENCE STORE INC	N	M
COLONIAL GROCERY	N	
BAKER'S PHARMACY, INC	N	M
EUDORA PHARMACY, INC	N	M
HUNTER'S PHARMACY, INC	N	M
GRACE CONVENIENCE STORE	Y; ASIAN	M
COUNTRY EXPRESS, INC	N	M
CHAPEL CREEK KITCHEN	Y; AMER	F
THE CHEESE CORNER, LLC	Y; AMER	F
DCEW, INC.	N	
NEW BLANE GENERAL STORE INC	N	M
TOBY W WALDEN	N	M
JANET ERWIN	Y;AMER	F
BJRM INC	N	
WILLIAM E KADI	N	M
K&L VINES, INC	N	M
ALBERT PIKE 66, INC	Y; ASIAN	M
ALBERT PIKE 66, INC	Y; ASIAN	M
COUNTRY EXPRESS INC	N	M



JIF-E-MART OF WALDRON INC	N	M
REX'S LIQUOR STORE, INC	N	M
SOUTHWESTERN TRADING COMPANY	N	M
SOUTHWESTERN TRADING COMPANY	N	M
SOUTHWESTERN TRADING COMPANY	N	M
SOUTHWESTERN TRADING COMPANY	N	M
SOUTHWESTERN TRADING COMPANY	N	M
SOUTHWESTERN TRADING COMPANY	N	M
SHEPHERD AUTO SALES, INC	N	
HANDI MART, INC	Y;AMER	
C&F LIQUORE STORE	Y; AFRI	M
MIKE'S COUNTRY STORE, INC	N	M
NORTH CROSSETT ONE STOP INC	N	F
WEST CROSSETT ONE STOP INC	N	
CROSSETT ONE STOP INC	N	
FOUNTAIN HILL ONE STOP INC	N	
THE CENTER POINT STORE	Y; AMER	F
COUNTRY LIQUOR	N	M
ANN' NOVELTY SHOPPE	Y; AFRI	F
R & J MARINA INC	N	M
LIENS ENTERPRISE INC	Y; ASIAN	F
F & L FOX INC	N	F
LUDWIG PROPERTIES	N	M
FOREST TOWER FOOD MART	N	M
TOBACCO TOWN INC		
TOBACCO TOWN INC		
TOBACCO TOWN INC		
TOBACCO TOWN INC		
TOBACCO TOWN INC		
SHEETAL USA ENTERPRISES INC		
PATTERSON FOOD SERVICE COMPANY	N	
PIRLIF, LLC	N	
DARRELL COSTON ENTERPRISES, INC	N	M
NORTHSIDE SUPER STOP INC	N	F
J&R GROCERY, INC	N	F
D & D ONE STOP	N	M
CLARKS BP FOOD MART	N	F
SHEETAL USA ENTERPRISES INC	Y; ASIAN	
MATAJ BAHUCHAR INC	Y; ASIAN	
GIANT OIL COMPANY OF ARKANSAS INC	N	
GIANT OIL COMPANY OF ARKANSAS INC		
RICKY WILLIAMS	N	

BRENDA RICHARDSON	N	
EDWARD SCHALES	N	
WENDELL WORKMAN	N	
JEANETTA BYFORD	Y;	
	AMERICAN	F
JEANETTA BYFORD	Y;	
	AMERICAN	F
TERESA WHATLEY		
TERESA WHATLEY		
BARBARA POTTER	Y;	
	AMERICAN	F
TOBACCO EXPRESS	N	
ASHFORD 7 FROST INC	N	
SPANKY'S SUPERSTORE		
KATHRYN MCDONOUGH	N	F
ORRELLS LIQUOR MART INC	N	
DIXIE MART INC	N	M
DIXIE MART INC	N	
DIXIE MART INC	N	
DIXIE MART INC	N	
DIXIE MART INC	N	
DIXIE MART INC	N	
DIXIE MART INC	N	
DIXIE MART INC	N	
DIXIE MART INC	N	
DIXIE MART INC	N	
MIKE WEAST		
TOBACCO SUPERSTORE INC	N	
CALLAWAY OIL CO, INC	N	
MISSILE MART INC	N	
MISSILE MART INC	N	
MISSILE MART INC	N	
MISSILE MART INC	N	
MISSILE MART INC	N	
DAVIS INVESTMENTS, LLC	N	
POONAM SHARMA	Y; ASIAN	
ARKOTA CONVENIENCE STORE INC	N	
HARBOR VENTURES, LLC	N	
DEMETRIA WALKER	Y(AFRI)	F
VANESSA BARNER	Y; AMER	F
BAKER ENTERPRISES, INC	N	M
B&B JUNCTION, INC	N	M
SAE HWA JUNG, INC	Y; ASIAN	

MONA-LEE HARMON	Y; AMER	F
CHARLIE TERRY HOLLOWAY	Y; ASIAN	F
CENTRAL BOWLING LANES, INC	N	
CCSGW CO. INC	Y; ASIAN	
ROBERT B MORTON	N	
BOB OR SHERRY TREECE	N	M(WHITE)
GE & BU INC	N	M(WHITE)
MARTHA HARKINS	Y	F(WHITE)
CURTIS JON BALCOM	N	M(WHITE)
CENTRAL ARKANSAS PTROLEUM INC	N	
CENTRAL ARKANSAS PTROLEUM INC	N	
CENTRAL ARKANSAS PTROLEUM INC	N	
CENTRAL ARKANSAS PTROLEUM INC	N	
CENTRAL ARKANSAS PTROLEUM INC	N	
CENTRAL ARKANSAS PTROLEUM INC	N	
CENTRAL ARKANSAS PTROLEUM INC	N	
CENTRAL ARKANSAS PTROLEUM INC	N	
CENTRAL ARKANSAS PTROLEUM INC	N	
MINIT MART INC	N	
WEND-XX OF ARKANSAS, INC	N	Y
WEND-XX OF ARKANSAS, INC	N	
COTTONS PATCH INC	N	
NEIGHTBORS FOOD STORE, INC	N	
THE BOLL WEEVIL INC	N	
JM LIQUORE INC	Y; ASIAN	
	Y;	
DESHAWN JONES PARTNERSHIP, LLC	AMERICAN	F
DESHAWN JONES PARTNERSHIP, LLC	Y; AMERICAN	
DESHAWN JONES PARTNERSHIP, LLC	Y; AMERICAN	
BROTHER & SISTER LLC	Y	F
SONIYA GAS & GO LLC	N	
SINAN LLC	Y; ASIAN	M
BYARS OIL CO INC	N	
BYARS OIL CO INC	N	
BYARS OIL CO INC	N	
BYARS OIL CO INC	N	
BYARS OIL CO INC	N	
BYARS OIL CO INC	N	
FARINDALE STORES, INC	N	M
SHERRY YARBROUGH	N	
SHERRY YARBROUGH		
DONNA HERRIN	Y; AMER	F
LAURIE BUNTING	N	F
SAMIRAH ALWAZIR	Y; ASIAN	

HORIZON FOOD AND GAS INC	Y; ASIAN	
HORIZON FOOD AND GAS INC	Y; ASIAN	
PERRY CLIFTON YOUNG	N	M
JAM INVESTMENTS, LLC	N	M
JAM INVESTMENTS, LLC	N	
E & N EXPRESS LLC	N	M
E & N EXPRESS LLC	N	M
BLAKE ST ONE STOP	N	M
M.D. ZAKIR HOSSAIN	N	M
M.D. ZAKIR HOSSAIN	N	M
BASHIR MEHTAR	N	M
M.R. PETROLEUM LLC	N	M
M.R. PETROLEUM LLC	N	M
M.R. PETROLEUM LLC	N	M
EXIT 44 - JBJ INC	N	M
ARK-TEX BEVERAGE LLC	N	M
GARY LATHROP	N	Y
AMAN GAS & CO LLC	N	M
GARDNER OIL CO INC	N	M
SHANNON REEVES	N	F
MARTHA GODWIN	N	F
JACK BENNIE	N	M
LEONARD HESS	N	M
DEBRA S BREWER	Y	F
RONALD L KING SR	?	M
JOE YEE	?	M
SHIRLEY JANNETTE SIMMS	Y	F(WHITE)
CLIFTON GILL	N	M(WHITE)
JAMES ROBERTSON	N	M(WHITE)
HARDING STREET VALERO	N	M
JOBAN LLC	N	M
NOOR LLC	N	M
ROYAL ENT. LTD, INC	N	M
DOUBLE QUICK, INC	N	F
DOUBLE QUICK, INC	N	F
DANETTE WARD	Y	F(WHITE)
PHILLIP 66 SUPERSTOP 670	Y	F(ASIAN)
BROOKS GET-N-GO LLC	Y	M(AFRICAN)
SPEARS COUNTRY STORE	N	M
HAN-D-WAY	N	M
PUNJABI LLC	N	F
MTA INVESTORS, INC	N	M
WHITE OAK PACKAGE STORE, INC	N	M

J & J FUELS, INC	N	M
J & J FUELS, INC	N	M
J & J FUELS, INC	N	M
J & J FUELS, INC	N	M
VAN OIL, INC	N	M
VAN OIL, INC	N	M(WHITE)
VAN OIL, INC	N	M(WHITE)
VAN OIL, INC	N	M(WHITE)
SUMMERWOOD PARTNERS LLC	N	M(WHITE)
SUMMERWOOD PARTNERS LLC	N	M(WHITE)
SUMMERWOOD PARTNERS LLC	N	M(WHITE)
SUMMERWOOD PARTNERS LLC	N	M(WHITE)
GATEWAY MARKETING INC	N	M(WHITE)
GATEWAY MARKETING INC	N	M(WHITE)
GATEWAY MARKETING INC	N	M(WHITE)
GATEWAY MARKETING INC	N	M(WHITE)
GATEWAY MARKETING INC	N	M(WHITE)
T BERRYS KOUNTRY KORNER, LLC	Y	F(WHITE)
AMERICAN SERVICE & SUPPLY, INC	Y	
AMERICAN SERVICE & SUPPLY, INC	Y	
BUD'S LIQUOR LLC	N	
MELISSA KNIGHT	N	
CHEX-2-CASH, LLC	N	M(WHITE)
OM LAXMI NARAYAN CORP	Y	
TOBACCO SUPERSTORE INC	N	
P.A.R. FUTURES INC	Y	
TOMMY KNIGHT	N	
GOLDEN DEAL INC	Y	ASIAN
FAST DEAL INC	Y	ASIAN
XPRESS DEAL INC	Y	ASIAN
XPRESS DEAL INC	Y	ASIAN
KIM & NA ENTERPRISE, INC	Y	M(ASIAN)
SKAR INC	Y	M(ASIAN)
M & M QUIK STOP	N	M(WHITE)
M & M QUIK STOP	N	M(WHITE)
M & M QUIK STOP	N	M(WHITE)
PAULA HATFIELD		F(WHITE)
SEWON INCORPORATION	Y	F(ASIAN)
JOY PLUS, INC	Y	F(ASIAN)
TIM'S FOOD STORE, LLC	N	F(WHITE)
BUY RITE OF PINE BLUFF	Y	M(ASIAN)
BROWNING PACKAGE STORE INC	N	M(WHITE)
BROADWAY #3	N	M(ASIAN)

KC CROSSROADS INC	Y	M(ASIAN)
DASH AND WILL SHELL SUPERSTOP	N	M(WHITE)
JUN JIN OK, LLC	Y	M(ASIAN)
GOLF LINKS SHELL#127 LLC	N	
FTN LAKE SUPERSTOP #144	N	
CENTRAL VALERO #467	N	
SHELL CENTRAL #148	N	
MOUNTAIN WINE & SPIRITS	N	M(WHITE)
LITTLE OLIVE LLC		M(ASIAN)
M & S PETROLEUM INC	Y	M(ASIAN)
SPEEDWAY INC	Y	M(WHITE)
BRADY MOUNTAIN ONE STOP INC	Y	F(WHITE)
JOHN SHARP	N	M(WHITE)
PLAZA 66 LLC	N	M(WHITE)
KELVIN SANDERS	N	M(WHITE)
SHIRLEY BARFIELD	Y	F(WHITE)
TAMCO OIL INC	N	TBD
AJW INC	N	M(WHITE)
KESS' KORNER LLC	N	M(WHITE)
SWAP INC	N	F(WHITE)
SWAP INC	N	F(WHITE)
COUNTYLINE CELEBRATIONS	N	F(WHITE)
COUNTRY CORNER, INC	N	M(WHITE)
HENRY RIGGS	N	M(WHITE)
SKAR INC	Y	M(ASIAN)
TIMBERLANE WINE & SPIRITS	N	M(WHITE)
LINDA GRIGSBY MGMT CORP	Y	F(WHITE)
FOOD FAST CORPORATION	N	M(WHITE)
FOOD FAST CORPORATION	N	M(WHITE)
FOOD FAST CORPORATION	N	M(WHITE)
KIM, INC	Y	M(ASIAN)
TOBACCO SUPERSTORE, INC	N	M(WHITE)
YE CORPORATION	Y	M(ASIAN)
DELOIS DILBECK	Y	F(WHITE)
MOSEDD ALKAYFEE	NA	M(ASIAN)
GREEN PETROLEUM OF ARKNASAS, INC	Y	F(ASIAN)
DONLEY ENTERPRISES, INC	Y	M(WHITE)
5108 BEVERAGE, LLC	N	M(WHITE)
LINDA L BEATTY	N	F(WHITE)
MELVIN GEIGGER	NA	M(BLACK)
DAVID BARR	N	M(WHITE)
SEVEN ELEVEN LIQUORE INC	N	M(WHITE)
SHANNON BROWN	NA	F(WHITE)

PEARCY GROCERY & FEED INC	N	M(WHITE)
WYNOKA SMITH	N	F(WHITE)
BARFIFTY RANCH STORE, LLC	N	M(WHITE)
A-1 ENTERPRISES	NA	M(WHITE)
A-1 ENTERPRISES	NA	M(WHITE)
KROGER LIMITED PARTNERSHIP	NA	
KROGER LIMITED PARTNERSHIP	NA	
KROGER LIMITED PARTNERSHIP	NA	
KROGER LIMITED PARTNERSHIP	NA	
KROGER LIMITED PARTNERSHIP	NA	
KROGER LIMITED PARTNERSHIP	NA	
LYON, INC	NO	M
B'S QUICK STOP	Y	F
PUNIZA,LLC	Y	M(ASIAN)
JIFFY MART	N	M(WHITE)
DAYBUCKS INC	Y	
CURTIS JON BALCOM	N	M(WHITE)
SOUTHERN SELLERS LLC	NA	M(WHITE)
TONYA MARTIN	Y	F(WHITE)
TAX CENTERS OF AMERICA	Y	F(AFRICANO
MYRON ABRAMS	N	M(WHITE)
RON LUSBY	N	M(WHITE)
ALI BASHAARA	N	M(ASIAN)
BALBIR GHOTRA	NA	M(ASIAN)
JAGTAR SINGH SANDHU	Y	M(ASIAN)
GRAPEVINE ENTERPRISES INC	N	M(WHITE)
CANADA INC	N	M(WHITE)
BOYD SMITH	N	M(WHITE)
BOYD SMITH	N	M(WHITE)
MODI RAJNIKANT	N	M(ASIAN)
HENRY OLLISON	Y	M(AFRICAN)
STACY ROGERS	Y	F(WHITE)
TERRY PAYNE	N	M(WHITE)
LARRY STRICKLIN	N	M(WHITE)
ROSEMARY CONLEY	Y	F(AFRICANO
STACY VANSICKLE	N	F(WHITE)
SCOTT LOCKHART	N	M(WHITE)
WANDA TEMPLE	N	F(WHITE)
A-1 ENTERPRISES	NA	M(WHITE)